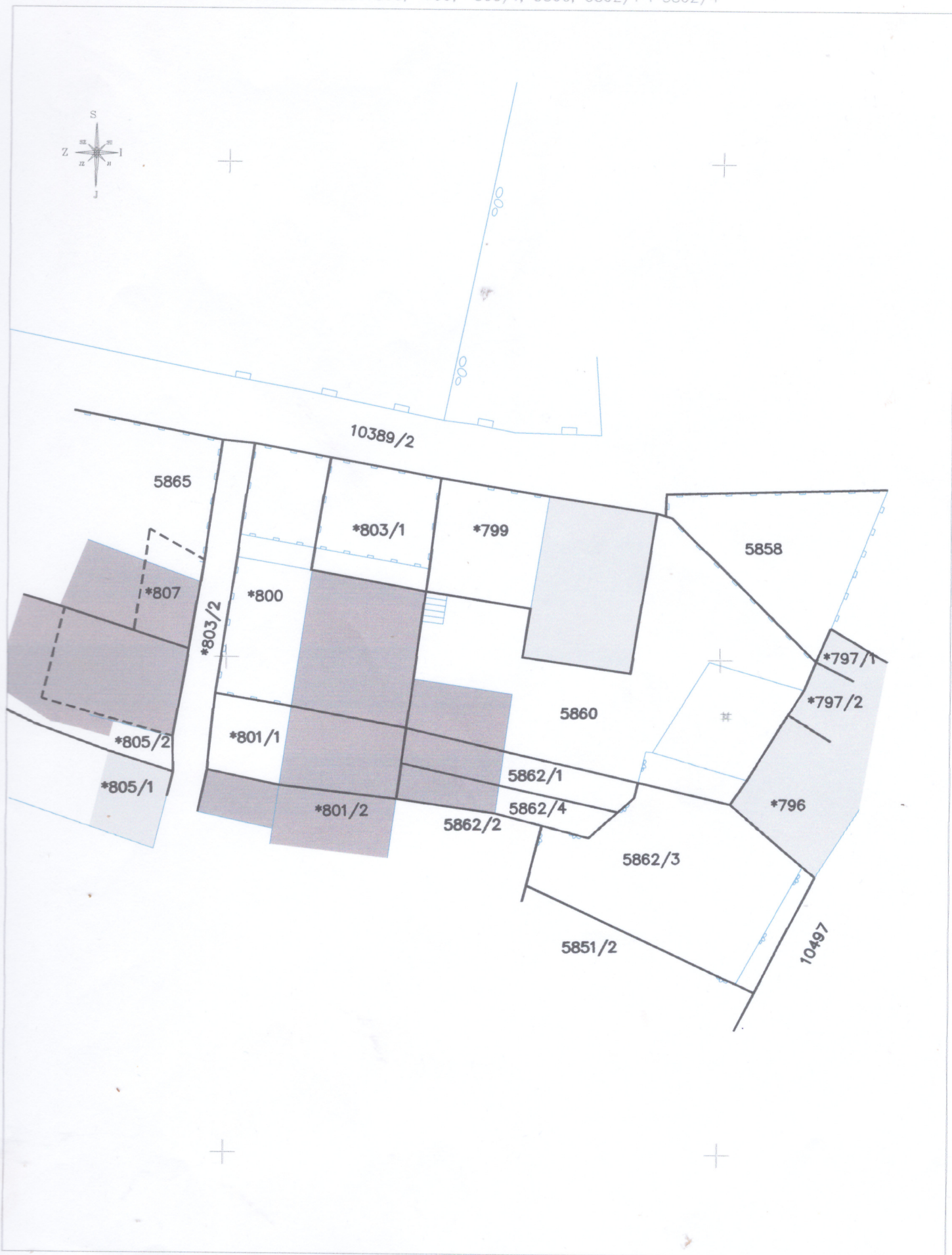


Geodetska situacija

K.O. ŽRNOVO

za dio kat. čest. *800, *799, *803/1, 5860, 5862/1 i 5862/4

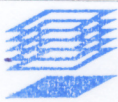


Korčula, 19.09.2024. Jakša Belić

dipl.ing.geod.

Izradio:

Ovlašteni inženjer geodezije
URED OVLAŠTENOG INŽENJERA
GEODEZIJE JAKŠA BELIĆ
Žrnovo



Geo 1640

M=1:250

Legenda:

— granica — parcele